



Babergh and Mid Suffolk Joint Local Plan Main Modifications

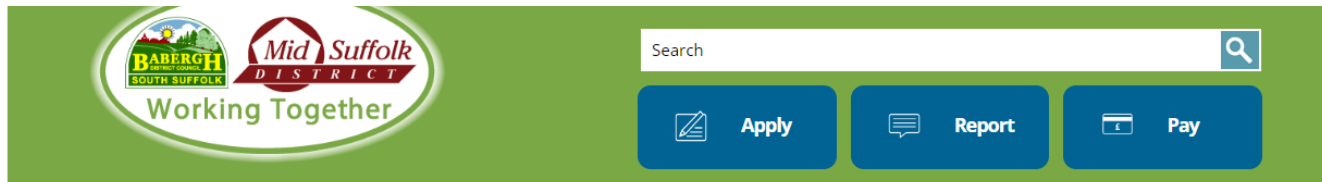
30th March 2023

Main Modifications Consultation

- Consultation on Proposed Main Modifications to the Joint Local Plan and Policies Map Changes the Inspectors consider are likely to be necessary to make the Plan sound and legally compliant.
- This consultation is not an opportunity to repeat or raise further representations about the published plan or to seek further changes to the plan.

Joint Local Plan Development

- Has been a long running iterative process.
- Key stages been through:
 - Evidence gathering, Issues and Options, Preferred Options, Submission Draft, Submission and Examination Hearings, Post-hearing meeting.
- Main Modifications now since Examination Hearings.
- Requirement to adopt a Local Plan by December 2023.



Working Together

Search

Apply Report Pay

[Home](#) > [Planning](#) > [Planning Policy](#) > [Joint Local Plan Examination homepage](#) > Joint Local Plan - Modification Consultation

Joint Local Plan - Modification Consultation

Babergh and Mid Suffolk Joint Local Plan – Proposed Modifications Consultation (March 2023)

Proposed Main Modifications

The Councils are inviting responses on their Proposed Main Modifications to the Babergh and Mid Suffolk Joint Local Plan in accordance with section 20 (7C) of the Planning and Compulsory Purchase Act 2004. Responses received will be provided to Inspectors to be considered at Examination. The consultation period runs from **12 noon on Thursday 16th March 2023 to 5pm on Wednesday 3rd May 2023** (6 weeks).

Babergh and Mid Suffolk District Councils are inviting comments on the proposed Main Modifications to the JLP and Policies Map Changes, which are changes the Inspectors consider are likely to be necessary to make the JLP sound and legally compliant. They are proposed without prejudice to the Inspectors' final conclusions on the JLP, which will take account of all representations submitted in response to this consultation. The Main Modifications have been subject to an updated Sustainability Appraisal and Habitats Regulations Assessment.

The Inspectors have also produced an Explanatory Note for the Main Modifications consultation.

In this section

- > [Joint Local Plan - Modification Consultation](#)
- > [New Joint Local Plan Examination Archive](#)




opusconsult



[Home](#) > Consultations

Consultations

Current documents open to consultation 

B&MSDC Joint Local Plan Modifications Consultation 2023

[Joint Local Plan Main Modifications](#)

Ends on 3 May 2023 (41 days remaining)

[Policies Map and Place Maps Modifications](#)


Ends on 3 May 2023 (41 days remaining)


[Babergh and Mid Suffolk Joint Local Plan Modifications - Supporting Documents](#)


Ends on 3 May 2023 (41 days remaining)

[Joint Local Plan Additional Modifications](#)

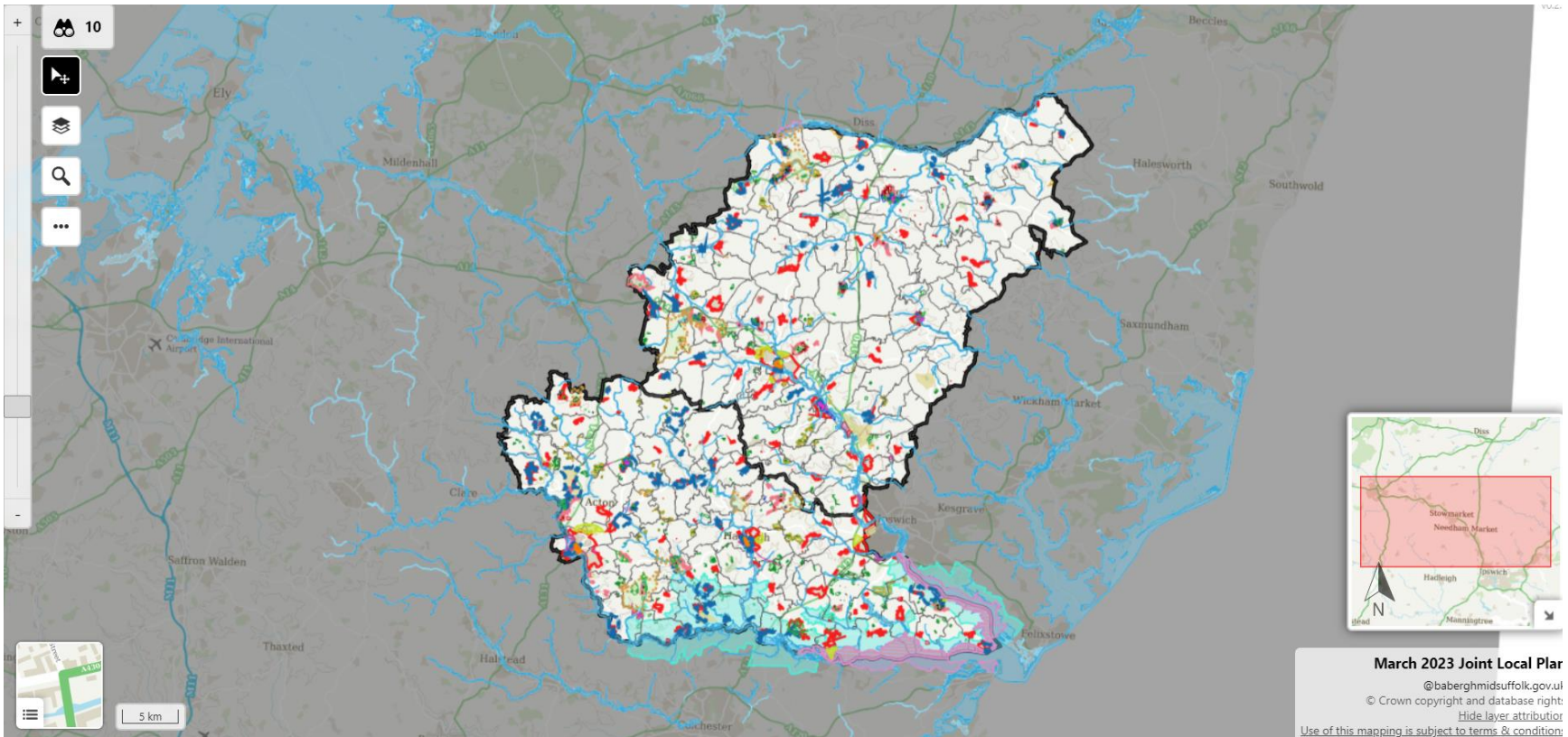
Ends on 3 May 2023 (41 days remaining)

Consultations which have closed 

Adopted documents 

 If you are having trouble using the system, please try our [help guide](#).

Draft Policies Map



Supporting Documents

- Public Notice of Consultation.
- Main Modifications Inspectors' Explanatory Note.
- Consolidated Tracked Changes PDF version of Joint Local Plan Part 1 (as modified).
- Joint Local Plan Addendum – Inset Policies Map extracts.

Additional Modifications Consultation

- Outside the scope of the Main Modifications.
- Minor changes as a consequence of the Main Modifications and/or typographical corrections etc.
- Councils are inviting comments on these.
- Are modifications the Councils' intend to make on adoption.

Consultation Details

- Runs from Thu 16th March to 5pm on Wed 3rd May 2023.
- Comments must be made in writing, ideally through the consultation portal.

Weblinks

- www.babergh.gov.uk/jointlocalplan
- www.midsuffolk.gov.uk/jointlocalplan