

# EMPOWERING SUFFOLK'S FUTURE



**Devolution** and what it  
could mean for our county



# What is devolution?

The Government currently controls where and how certain funding is spent in Suffolk.

In December 2022, Suffolk County Council signed an in-principle agreement with the Government to transfer some of that control and funding to Suffolk:

- Level 3 deal
- Additional funding
- More local decision-making
- Greater profile and influence with Government

This is part of the Government's Levelling Up agenda.

**EMPOWERING  
SUFFOLK'S  
FUTURE**

 **Suffolk**  
County Council

# **DEVOLUTION AND WHAT IT MEANS FOR OUR COUNTY**

# The deal in numbers



Additional Investment Fund worth **£16m** per year for 30 years



Local control of **£9.4m** Adult Education Budget each year



**£5.8m** one off funding to develop brownfield housing sites



**£3m** one off funding to expand Suffolk's Greener Homes 0% Loan Scheme to improve energy efficiency and renewable generation



An integrated multi-year transport settlement

**£500m+**

TOTAL over 30 years

# **DEVOLUTION AND WHAT IT MEANS FOR OUR COUNTY**



# £480m Investment Fund

Control over an investment fund worth £16m per year for thirty years

Could be used to:

- Create new jobs
- Invest in new technologies
- Drive economic growth
- Plan for the long term
- Help people fulfil their potential

# Adult Education Budget

Control of £9.4m annual Adult Education Budget from 2025 (currently centrally allocated)

Responsibility for commissioning adult education in Suffolk:

- Better targeted
- Closer, more focused collaboration with business and other partners
- Focus on the skills we need in Suffolk



## Better transport links

Greater control of transport budgets

Additional £250,000 per year for two years  
to finalise our local transport plan

Multi-year transport funding settlement

Could be used to:

- reduce carbon emissions from transport
- improve the bus offer in rural areas
- introduce smart/integrated ticketing
- reduce congestion





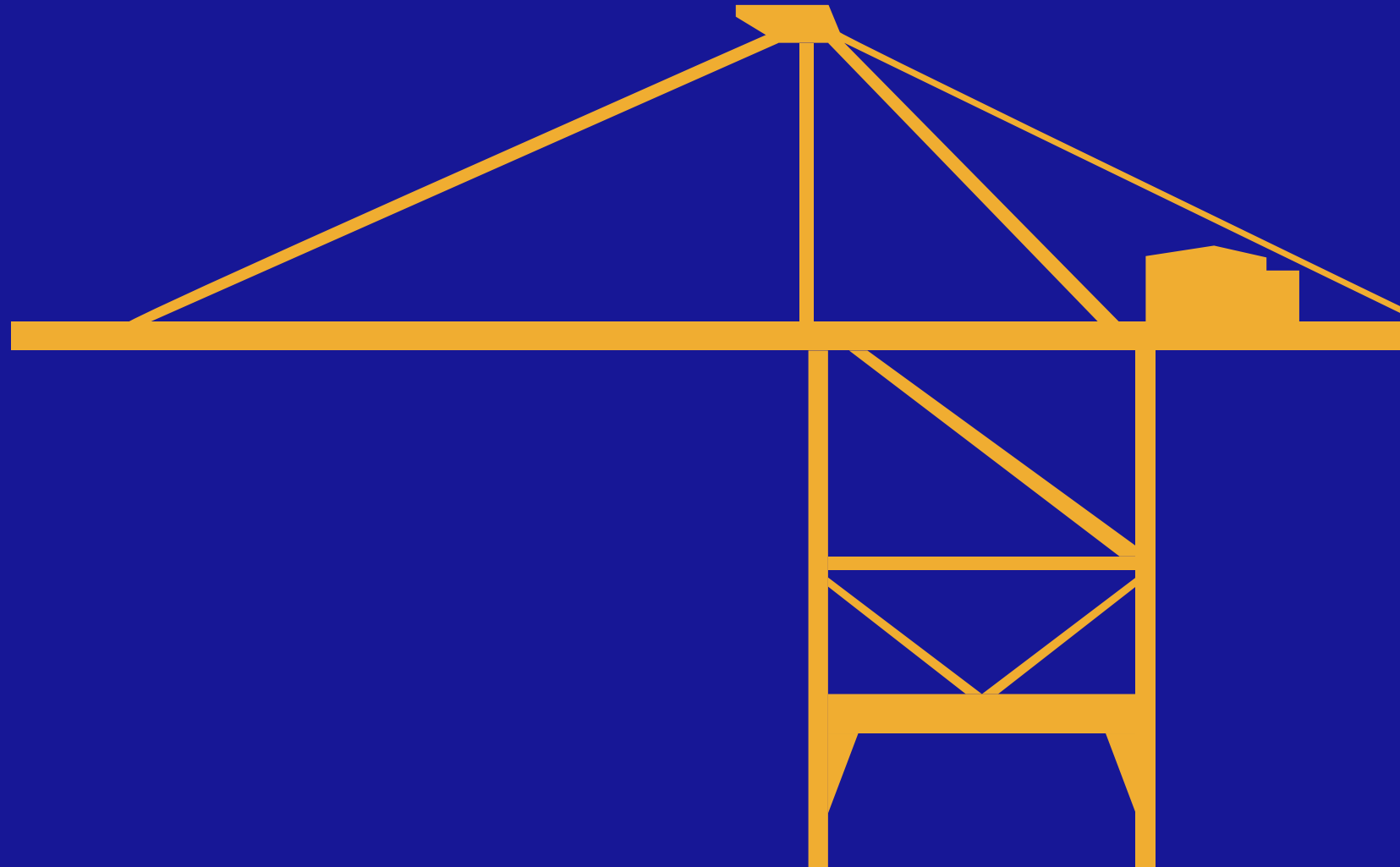
# Regeneration

£5.8m lump sum to unlock  
previously used land for  
regeneration

200+ brownfield sites in Suffolk could  
be appropriate for development

Redundant industrial land could  
become housing

Work collaboratively with D&Bs in  
line with Local Plans



# Energy efficient homes

£3m one-off Government investment to expand SCC Greener Homes 0% Loan Scheme

Additional money to retrofit new technology or features to homes and improve energy efficiency

E.g. upgraded insulation, energy-efficient heating systems, better ventilation

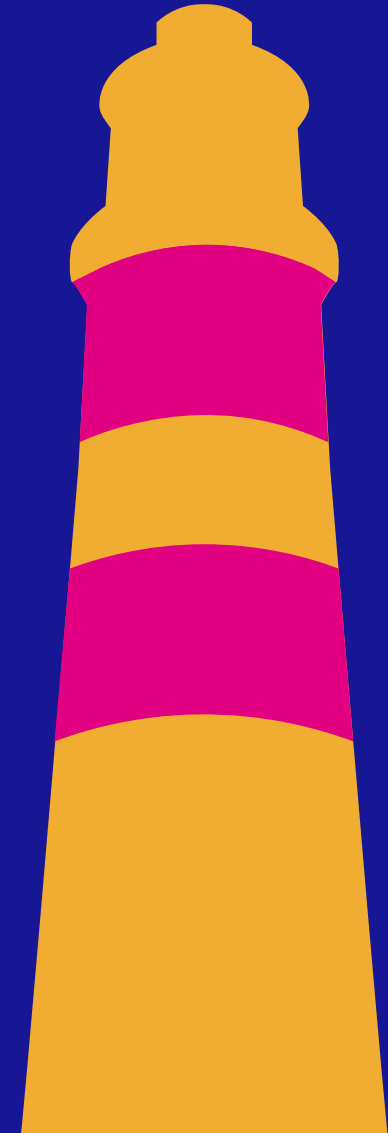
# Local decision-making

Suffolk County Council's leader would be directly elected by residents

First election in **May 2025** in line with next county council elections

No new levels of bureaucracy:

- The directly elected leader would be part of Suffolk County Council
- Existing decision-making arrangements would apply

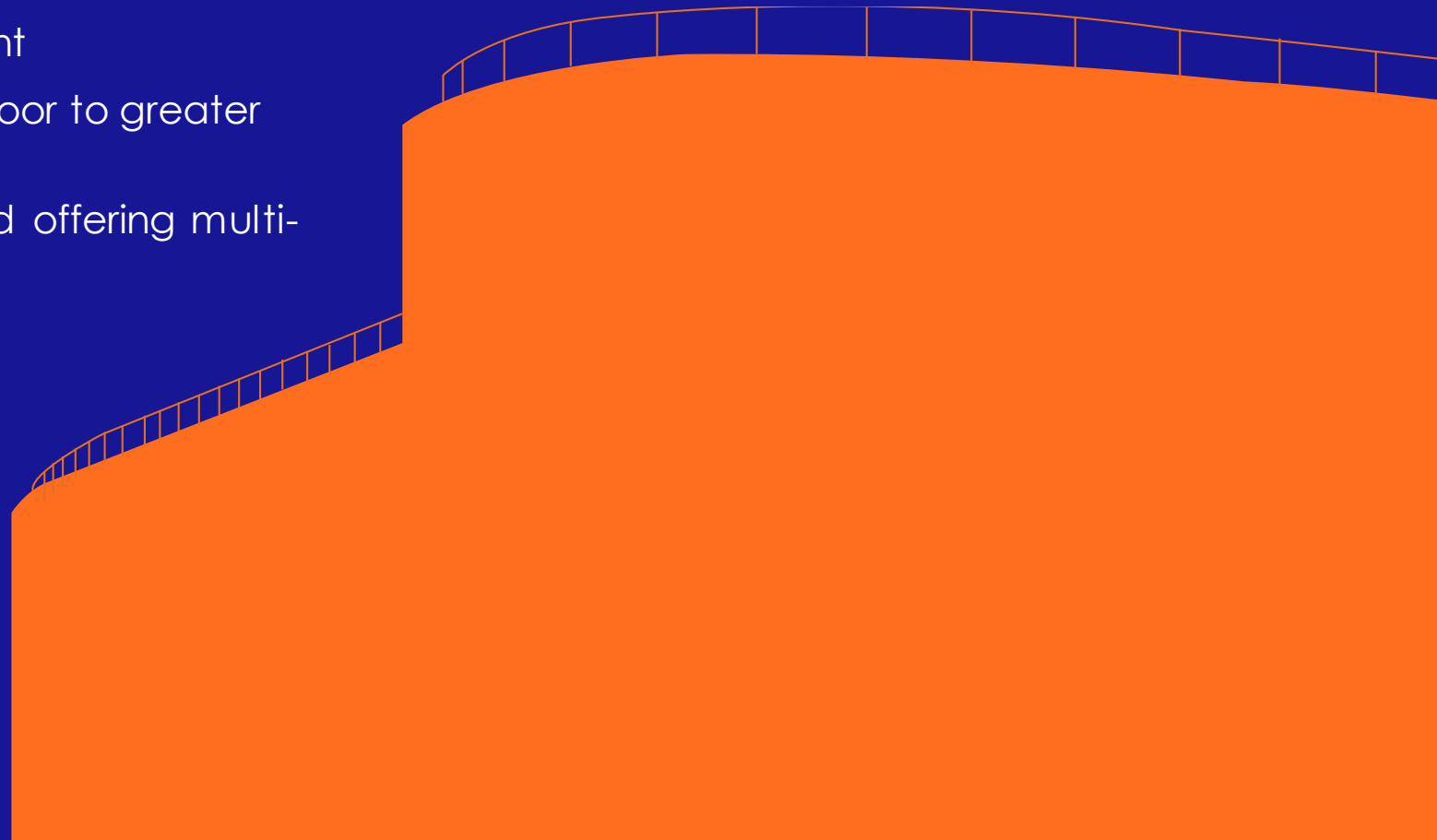


# New opportunities for Suffolk

Devolution is a journey, not a one-off event

Experience shows devolution opens the door to greater powers and funding over time

4th level of devolution already announced offering multi-year funding and more influence



# Devolution and what it could mean for our county

**We will go to consultation on 18 March 2024.**

Your input today will shape the consultation.

**Any questions?**

